

# Euroseal® Valida

The thermosealing machine that validates the process

Euroseal® Valida comes with all of the best features of a manual sealing machine: it has an innovative, ergonomic design and it is resistant, safe, versatile thanks to its patented roll holder, and extremely easy to use thanks to the practical support surface and the transparent polycarbonate cover. Euroseal® Valida can validate sealing cycles and save data (including whether they were completed successfully) on a USB key or SD card. Sealing data can be transferred directly to a computer using Ethernet and WiFi connections. Thanks to the innovative touch-screen display with a user-friendly interface on the support surface, users can quickly and intuitively look through the menu and select one of the preset cycles or a free cycle with their own choice of sealing temperature, allowing them to seal rolls and pouches of all kinds. A stand-by function can be enabled to reduce energy consumption. An optional E-WiFi wireless kit is available on request. In full compliance with UNI EN 868-5 EN ISO 11607-2.



#### Sealing strip:

12 mm

#### Sealing area width:

310 mm



#### Dimensions (wxhxd):

Standard:  
500 x 490 x 315 mm  
Mounted roll holder:  
500 x 310 x 210 mm  
Double roll holder:  
500 x 490 x 420 mm



#### Weight:

8.3 Kg

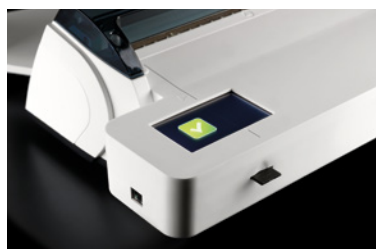


#### Power supply:

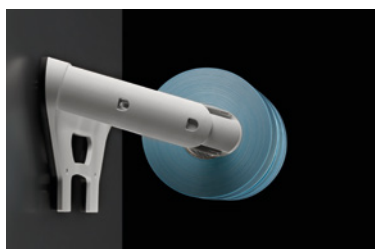
200 - 240 V  
50/60 Hz

#### Absorbed power:

100 W



Touch-screen display  
SD card and Ethernet cable



Special patented  
roll holder



## Validation

It validates sealing cycles, confirming that they have been completed successfully and saving the associated data (time, temperature and pressure) on an SD card.



## Practicality

It has a convenient, practical support surface and a polycarbonate cover that allows the roll to be monitored all of the way to the sealing area.



## Traceability

The sealing data can be transferred directly to a PC via Ethernet and WiFi connections.



## User-Friendly

Users can choose between preset cycles and a free cycle with their choice of temperature.



## Versatility

The special patented roll holder can be wall-mounted making the machine extremely versatile and adaptable to the space available.



## Safety

It minimizes the risk of errors and accidents, in full compliance with the EN 11607-2 and EN 868-5 standards.

